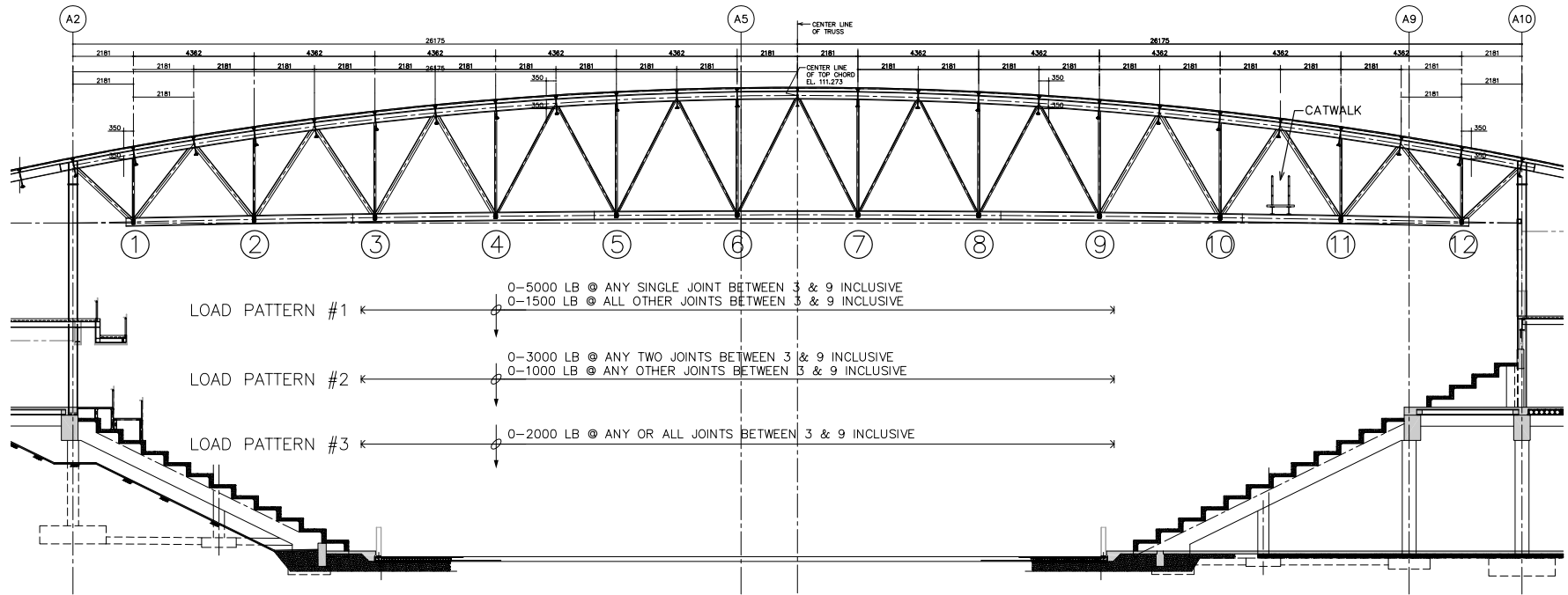


W:\20400\VIC.020460-0009 Cranbrook Rec Centre - Load Review\VIC.020460.0009 SK2-section.dwg, 2/11/2009 10:57:23 AM, Use:364, 1:1



NOTES:

1. EVENT LOADING PERMITTED ONLY AT BOTTOM CHORD PANEL POINTS BETWEEN JOINTS 3 AND 9 INCLUSIVE.
2. DO NOT LOAD BOTTOM CHORD BETWEEN PANEL POINTS.
3. BRIDLE LOADS BETWEEN TRUSSES AT PANEL POINTS.
4. PERMITTED LOADS INCLUDE WEIGHT OF SUSPENSION HARDWARE AND ACCESSORIES AS WELL AS WEIGHT OF SUSPENDED ITEMS.
5. CONTACT READ JONES CHRISTOFFERSEN FOR HEAVIER LOADING, FOR LOADING CONDITIONS NOT COVERED ABOVE OR FOR LOADING OUTSIDE PERMITTED EVENT LOADING AREA.

ARENA ROOF TRUSS ELEVATION (LOOKING WEST)
SCALE N.T.S.



Vancouver • Victoria • Nanaimo • Calgary • Edmonton • Toronto
Suite 220, 645 Ytee Road, Victoria, BC V9A 6X5 Canada
Office 250 386-7794 Fax 250 381-7900 www.rjc.ca

**CRANBROOK RECREATION CENTRE - LOAD REVIEW
PERMITTED EVENT LOADING ON ROOF TRUSSES**

TRUSS ELEVATION - LOAD PATTERNS

Scale	Date	Project No.	Sketch Number	Rev.
N.T.S	FEB. 11, 2009	VIC.020460.0009	SK2	.